

# Robo-Met.3D™ Services

A UES SERVICE



**ROBO-MET.3D™**  
A UES PRODUCT

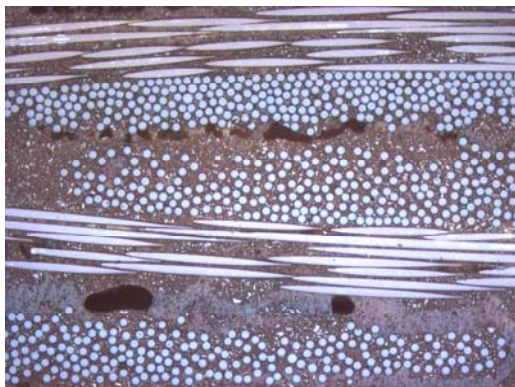


## Would you like to have a Robo-Met.3D to serial section and characterize just a few samples?

A Robo-Met.3D has been installed at UES, Inc. to provide serial sectioning services to our customers. Supported and operated by our group of highly experienced metallurgists and materials scientists, UES, Inc. can provide solutions for all of your three-dimensional characterization needs.

The Robo-Met.3D system offers materials scientists the ability to more accurately capture the true shape of grains and grain boundaries, which can lead to a clear depiction of the microstructure of a material. Knowledge of this data can be utilized in failure analysis, product development, or in understanding the mechanical behavior of materials properties.

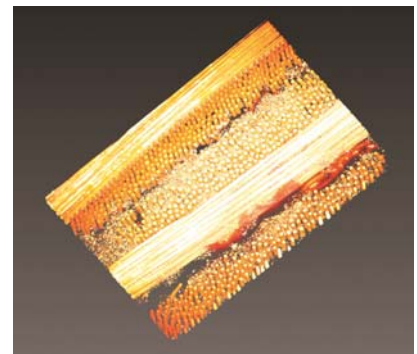
- ◆ Sectioning rates and data acquisition are significantly faster than manual processing
- ◆ Consistency and precise control of the machine gives accurate data for 3D reconstruction
- ◆ Competitive pricing compared to other metallographic service providers



*Sectioning of Polymer Matrix Composite:  
Nextel 610 Alumina Fiber in RP46 Matrix*

## Materials Capabilities

- Metals
- Alloys
- Ceramics
- Polymers
- Composites
- Metal foams
- Fossils



*Reconstruction of Polymer Matrix Composites  
Nextel 610 Alumina Fiber in RP46 Matrix*



For more information, please contact:

info@ues.com Phone: (937) 426-6900 Fax: (937) 429-5413

UES, Inc. 4401 Dayton-Xenia Road Dayton, Ohio 45432-1894 www.ues.com

# Request Services Quote

We would be happy to prepare a specialized quotation to analyze your sample.  
To adequately do so, we would need the following information:

**Name:**

**Company Name:**

**Title/Department:**

**Mailing Address:**

**City:**

**State:**

**Zip:**

**Country:**

**Phone:**

**Fax:**

**Email:**

**Material:**

**Type of Light Microscopy:**

**Magnification:**

**Material Preparation Notes:**

**Slice Thickness:**

**Number of Slices:**

**Raw Data: Y / N**

**Post Processing: Y / N**

**Cross Section Dimensions:**

**Length:**

**Width:**

**Region of Interest Dimensions**

**Length:**

**Width:**



**For more information, please contact:**

info@ues.com Phone: (937) 426-6900 Fax: (937) 429-5413

UES, Inc. 4401 Dayton-Xenia Road Dayton, Ohio 45432-1894 [www.ues.com](http://www.ues.com)